

Thank you for choosing our VGA to HDMI converter. We hope this converter could bring you a perfect visual experience. Before using it, please read this manual carefully for your better knowledge of all the functionalities of this converter.

Our series of HDMI splitters, switchers, extenders, matrixes and converters are designed to make your A/V device use more convenient, more comfortable, more productive and more cost-efficient.

Introduction

VGA to HDMI converter (Model:ADR-300) use a single VGA+R/L source, accessing to single HDMI 1.3 sinks. The Converter allows one VGA+R/L device to be converted easily to one HDMI 1.3 monitor or projector. This model is mainly applied for computer, laptop, DVD play, gaming consoles and some other video devices with VGA outputs. With this converter, you can connect any video sources which come with VGA output to large HD screens or HD projectors. The product only changes the signal format from analog to digital, but doesn't have impact on the quality of input signal, support maximum 1920X1080 resolution same format as input.

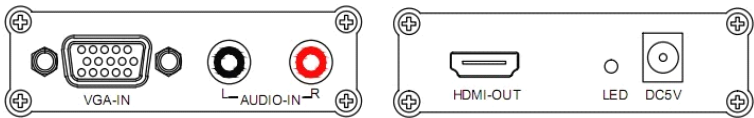
Functions

- ※ video input – VGA
 - 640*480@60Hz、 800*600@60Hz、 1024*768@60Hz、 1280*720@60Hz、 1280*768@60Hz、 1280*800@60Hz、 1280*1024@60Hz、 1360*768@60Hz、 1600*1200@60Hz、 1920*1080@60Hz
- ※ Audio input – R/L
- ※ Video Output – HDMI (same format as input)
- ※ HDMI output can support 1080P/1.3
 - ※ Light indicator:
 - ※ Blue light states the product is working and can recognize the signal format automatically.

SPECIFICATIONS

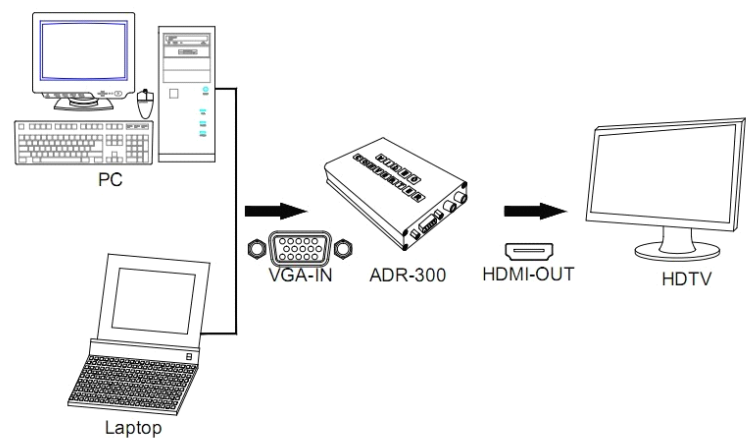
HDMI Ver.	HDMI1.3
HDCP Ver.	HDCP1.2
Input Video signal	0.5-1.5Vp-p(TTL)
Output DDC signal	5Vp-p(TTL)
HDMI resolution	480P/720P/1080I/1080P @60HZ
VGA resolution	Up to 1920*1080@60Hz
Operating Temperature range	-15 to +40℃
Operating Humidity range	5 to 90%RH(No Condensation)
Power adapter format	Input:AC (50HZ, 60HZ) 100V-240V; Output: DC5V/1A
Dimension (L x W x H)	110 x 75 x 22mm
Weight	180g

Interface function



Item	Spec.
VGA IN	Connect VGA Source
AUDIO-IN	Connect AUDIO Source
HDMI-OUT	Connect HDMI Display
LED	Power Indicator
DC 5V	Connect USB power supply(or DC5V/1A)

Connection Image



VGA to HDMI converter
USER MANUAL

Accessories & Package

Item	Qty	Notes
VGA to HDMI converter	1	
DC5V/1A	1	
User Maunal	1	